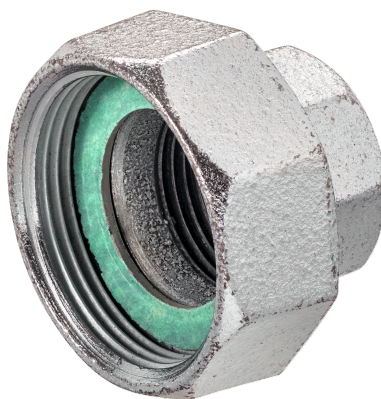


Pipe connector for globe valve with external thread

- internal thread G to internal thread Rp
- incl. gasket



Picture may differ from product

Type Overview

Type	DN	G ["]	Rp ["]	B [mm]	Suitable for	Weight
ZH4515	15	1 1/8	1/2	21	H411B...H415B H511B...H515B	0.14 kg
ZH4520	20	1 1/4	3/4	23	H420B H520B	0.18 kg
ZH4525	25	1 1/2	1	26	H425B H525B	0.21 kg
ZH4532	32	2	1 1/4	30	H432B H532B	0.35 kg
ZH4540	40	2 1/4	1 1/2	32	H440B H540B	0.43 kg
ZH4550	50	2 3/4	2	35	H450B H550B	0.63 kg

Technical data

Materials	Used materials	Malleable cast iron, galvanized
-----------	----------------	---------------------------------

Safety notes



- This accessory has been designed for use in stationary heating, ventilation and air-conditioning systems and must not be used outside the specified field of application, especially in aircraft or in any other airborne means of transport.
- Only authorised specialists may carry out installation. All applicable legal or institutional installation regulations must be complied with during installation.
- The accessory may not be disposed of as household refuse. All locally valid regulations and requirements must be observed.

General notes

Delivery notes In the ZH45.. scope of delivery: union nut (G thread), insert (Rp thread), gasket

Dimensions

Dimensional drawings

