

# Steel ball valve - DN200-400, PN25

Type 86212 / 86012 - Full bore

**Welding × Welding with high stem and BROEN-Gear**

Fully welded steel ball valve.

**Materials**

See next page.

**Applications**

Isolating valve for heating systems, district heating, cooling and industrial purpose.

**Media**

Water, air and other media not decomposing the steel. Not suitable for steam. If in doubt, please contact BROEN BALLOMAX® Sales Department.

**Surface treatment**

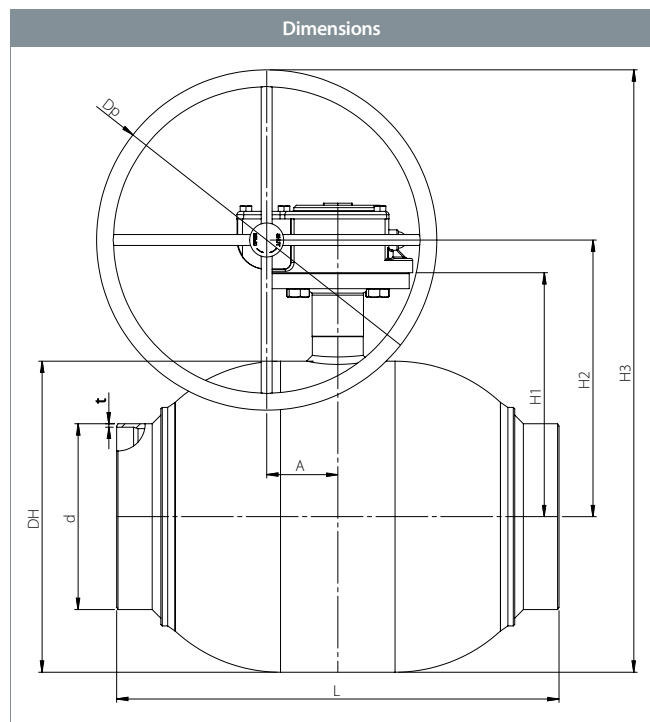
Eco-friendly protection finish against corrosion.

**Approvals and certificates**

BROEN is certified according to ISO 9001 and environmentally certified according to ISO 14001. BROEN BALLOMAX® is approved according to the requirements of Pressure Equipment Directive (PED). All ball valves as from DN40 are CE-marked. The 3.1 certificate is available upon request.

**Notice**

Other pressure levels, lengths and special flanges available on request.



					All dimensions in mm								
DN	BROEN No.	Bore	Kvs	net Weight kg	DH	d	t	L	H1	H2	H3	Dp	A
200	8621225200 480	200	9200	85.8	356	219.1	5.0	533	115	330	555	450	68.8
250	8621225250 480	250	13500	142.4	457	273.0	5.0	650	130	407	657	500	104.5
300	8601225300 480	305	21600	261.5	508	323.9	5.6	819	155	460	640	350	130.0
400	8601225400 480	400	35000	538.0	660	406.4	6.3	991	180	569	794	450	182.0

## Steel ball valve - DN200-400, PN25



Type 86212 / 86012 - Full bore

Technical drawing		Material description	
	1	Welding	Steel - P235GH / 1.0345 / EN 10217-2
	5	Valve body	Steel - P235GH / 1.0345 / EN 10217-2
	6	Ball	Stainless steel - AISI304L / 1.4306 / EN 10217-7
	7	Seat ring	PTFE 20% Carbon
	12	Stem	Stainless steel - ASTM420 / 1.4021 / EN 10088-3
	15	O-ring	Rubber - EPDM70
	23	ISO-flange	Steel - S235JRG2 / 1.0038 / EN 10025-2
	27	O-ring	Rubber - EPDM70
	48	Stem guide	Steel - P235GH / 1.0345 / EN 10216-2
	50	Friction ring	Gunmetal
	51	Bottom end	Steel - S355J2H - EN 10210
	52	Back-up ring	Steel - S355J2H - EN 10210
	53	Springs	Stainless steel - AISI304 / 1.4301 / EN 10088-3