

# RESILIENT SEAT GATE VALVE DUCTILE IRON BODY

TECHNICAL PASSPORT

VOC 4241CM-00

## RESILIENT SEAT GATE VALVE WITH BARE SHAFT AND ISO TOP FLANGE DUCTILE IRON BODY - FLANGED PN10/16

### APPLICATION

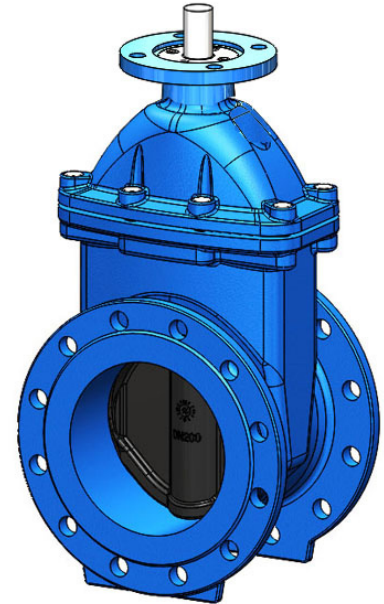
The TECOFI resilient seat gate valve is intended for use in application such as: water supply and treatment, irrigation and sanitation.



Fluids : water, waste water, non-aggressive neutral liquids, etc.

### GENERAL CHARACTERISTICS

- Range : from DN40 to DN400.
- Resilient seat gate valve for ON/OFF or control operation, with non-rising stem.
- PN10 and PN16 flange mounting (drilling of suitable flanges from DN200).
- Body and bonnet assembled by screws protected by a molded sealing gasket.
- Wedge in ductile iron covered with a thick layer of elastomer.
- Ribs on the wedge outer face to facilitate its guiding in the body.
- Upstream-downstream tightness : at the end of closing, the wedge is pressed onto the flat bottom of the valve and thanks to its elasticity, perfectly matches its shape.
- Sealing of the upper part guarantees thanks to a system of O-rings placed next to each other and separated by small metal segments.
- Very economical use requiring no maintenance.
- Low pressure drop.
- Full bore at the end of opening.
- Without retention zone in the low part.
- Good corrosion resistance (epoxy coating inside and outside the body)
- Screws protected from external aggressions by wax plug.
- Change of stem seals possible under load.



### STANDARDS

<b>Design</b>	Manufacture according to DIN3352 and EN 1171.
<b>Face to face</b>	Face to face dimension according to EN 558 serie 14 and DIN 3202 / F4 short pattern
<b>Connection</b>	Mounting flange in accordance with EN1092-2 : ISO PN10 and ISO PN16
<b>Tests</b>	Pressure test according to standards EN12266-1

### PRODUCTS APPROVALS

EN 1074

EAC

Tecofi France

ISO 9001  
ISO 14001  
BUREAU VERITAS  
Certification

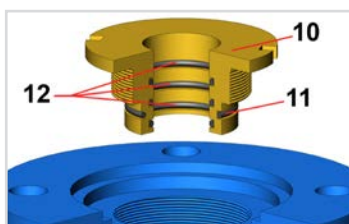
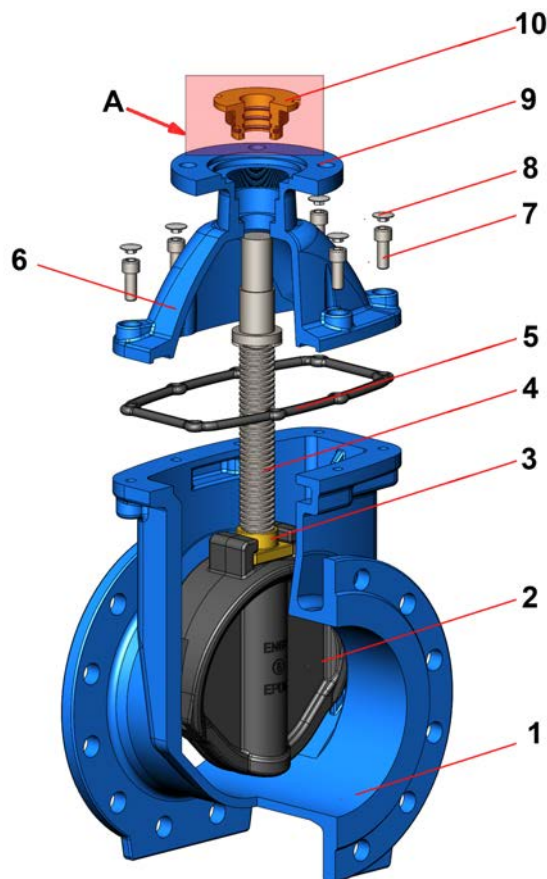


# RESILIENT SEAT GATE VALVE DUCTILE IRON BODY

## CONSTRUCTION

The valves are coated with epoxy paint on the outside and inside of the body and the bonnet to protect against corrosion.

Component	Coating
Body (1)	Epoxy powder RAL 5015 250 microns
Bonnet	Epoxy liquid RAL 5015 250 microns



View A

Pos.	Quantity	Description	Material	Equivalences		
				DIN	ASTM	BS
1	1	Body	Ductile iron	GGG50	A536 65-45-12	1563 EN-JS1050
2	1	Wedge	EPDM coated ductile iron	GGG50	A536 65-45-12	1563 EN-JS1050
3	1	Stem nut	Brass			
4	1	Stem	Stainless steel 420	1.4021	AISI 420	420 S 37
5	1	Joint	EPDM			
6	1	Bonnet	Ductile iron	GGG50	A536 65-45-12	1563 EN-JS1050
7	n	Screw	Stainless steel 304			
8	n	Wax plug				
9	1	ISO plate	Ductile iron	GGG50	A536 65-45-12	1563 EN-JS1050
10	1	Nut	Brass			
11	1	O ring	EPDM			
12	3	O ring	EPDM			

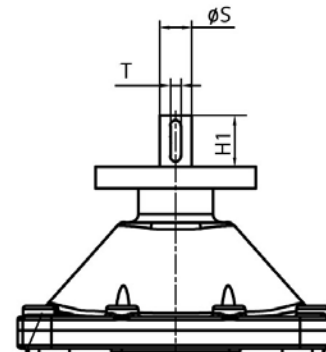
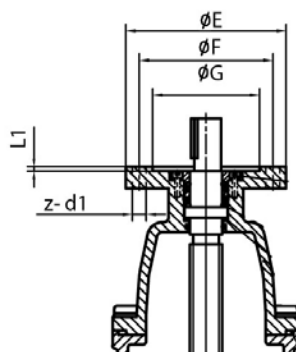
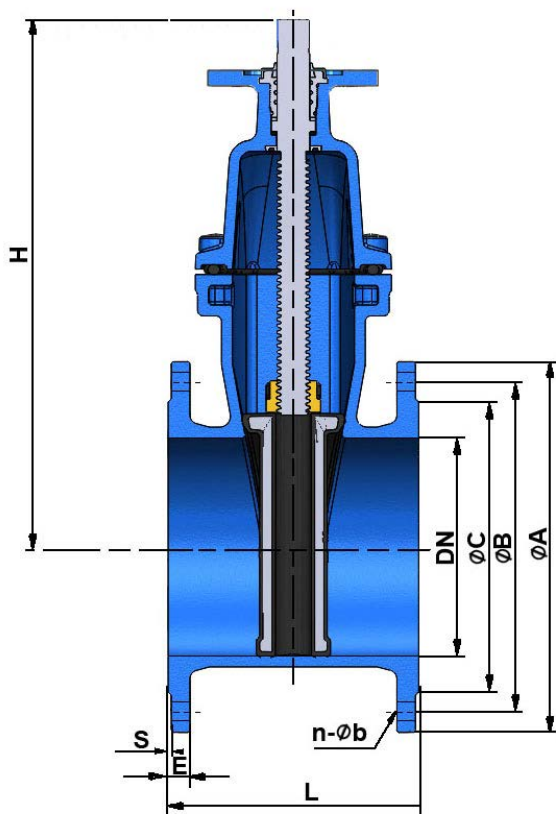
n = 4 (DN40-DN65); 6 (DN100); 8 (DN150-DN300) ; 12 (DN350-DN400)

# RESILIENT SEAT GATE VALVE DUCTILE IRON BODY

## TECHNICAL PASSPORT

VOC 4241CM-00

### DIMENSIONS



DN		ISO	L1	ØE	ØF	ØG	z-d1	T	ØS	H1	Number of turns	Torque* (Nm)
mm	inch											
40	2"1/2	F10	4	125	102	70	4-Ø11	6	20	30	7	30
50	2	F10	4	125	102	70	4-Ø11	6	20	30	8	40
60/65	2"1/4 / 2"1/2	F10	4	125	102	70	4-Ø11	6	20	30	10	50
80	3	F10	4	125	102	70	4-Ø11	6	20	30	11	60
100	4	F10	4	125	102	70	4-Ø11	6	20	30	14	80
125	5	F10	4	125	102	70	4-Ø11	6	20	30	14	92
150	6	F10	4	125	102	70	4-Ø11	6	20	30	17	100
200	8	F14	5	175	140	100	4-Ø18	8	30	55	22	160
250	10	F14	5	175	140	100	4-Ø18	8	30	55	27	200
300	12	F14	5	175	140	100	4-Ø18	8	30	55	27	240
350	14	F14	5	175	140	100	4-Ø18	8	30	55	31	300
400	16	F14	5	175	140	100	4-Ø18	8	30	55	35	320

\* - Torque value without safety factor

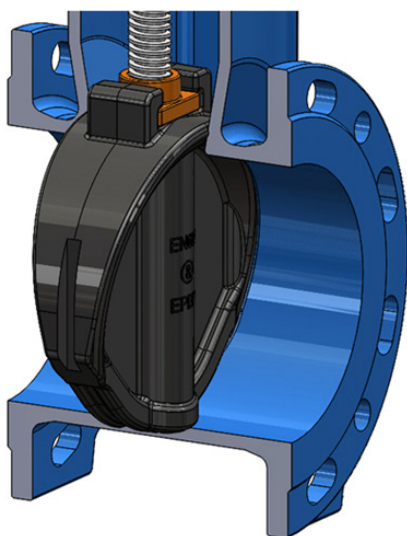
DN		L	H	ØD	ØA		ØB		E		S	n - Øb		Weight (kg)
mm	inch				PN10	PN16	PN10	PN16	PN10	PN16		PN10	PN16	
40	2"1/2	140	220	180	150	110	16	3	4 x Ø19	10				
50	2	150	230	180	165	125	16	3	4 x Ø19	10.75				
60/65	2"1/4 / 2"1/2	170	265	200	185	135/145	16	3	4 x Ø19	13.9				
80	3	180	290	200	200	160	16	3	8 x Ø19	15				
100	4	190	335	250	220	180	16	3	8 x Ø19	18				
125	5	200	380	250	250	210	16	3	8 x Ø19	29.5				
150	6	210	415	300	285	240	16	3	8 x Ø23	34				
200	8	230	510	300	340	295	17	3	8 x Ø23 12 x Ø23	52.7				
250	10	250	600	350	400	350 355	19	3	12 x Ø23 12 x Ø28	73.5				
300	12	270	690	350	455	400 410	20.5	4	12 x Ø23 12 x Ø28	104.5				
350	14	290	790	400	520	460 470	22.5	4	16 x Ø23 16 x Ø28	165				
400	16	310	855	400	580	515 525	24	4	16 x Ø28 16 x Ø31	230				

# RESILIENT SEAT GATE VALVE DUCTILE IRON BODY

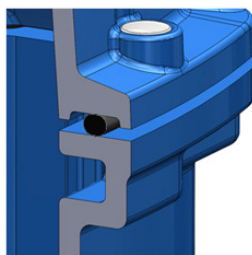
## WORKING CONDITIONS

Maximum working pressure : 16 bar

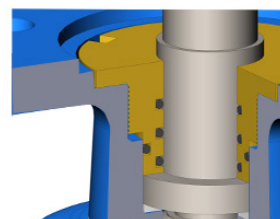
Maximum working temperature : +80°C



Upstream/downstream tightness



Body/bonnet tightness



Valve top tightness